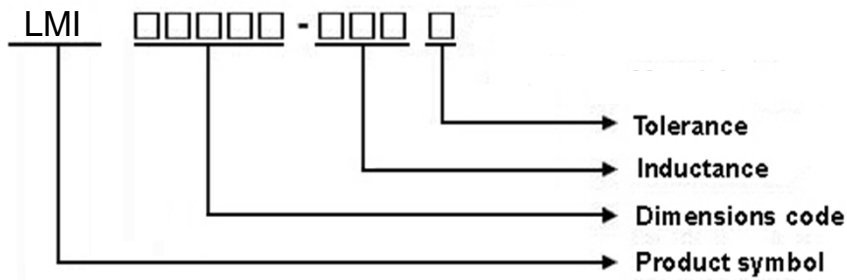


**1 Scope:** This specification applies to large current and low loss SMD shielding power inductor.

### 2 Part Numbering:

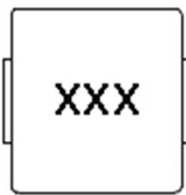


### 3 Rating:

Operating Temperature:  $-55^{\circ}\text{C} \sim 125^{\circ}\text{C}$  (Including self - temperature rise)

Storage Temperature: (on tape & reel):  $-20^{\circ}\text{C}$  to  $+40^{\circ}\text{C}$ ; 75% RH max.

### 4 Marking:



**Ex :** LMI04020-R10M

**Marking :** 10M

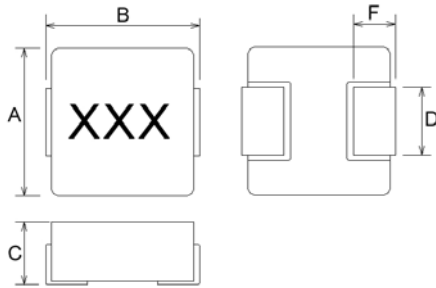
**Marking color :** Black

### 5 Standard Testing Condition

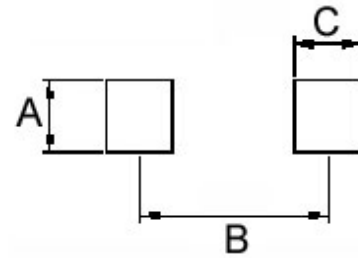
	Unless otherwise specified	In case of doubt
Temperature	Ordinary Temperature(15 to 35°C)	20 to 30°C
Humidity	Ordinary Humidity(25 to 85% RH)	50 to 80 %RH

## 6 Configuration and Dimensions:

### Shape and Dimensions



### Recommended Pattern



Dimensions in mm

TYPE	A	B Max	C Max	D	F
04020	4.1±0.2	4.6±0.2	2.0	1.5±0.3	1.0±0.5

Dimensions in mm

TYPE	A	B	C
04020	2.5	3.7	1.5

## 7 Electrical Characteristics:

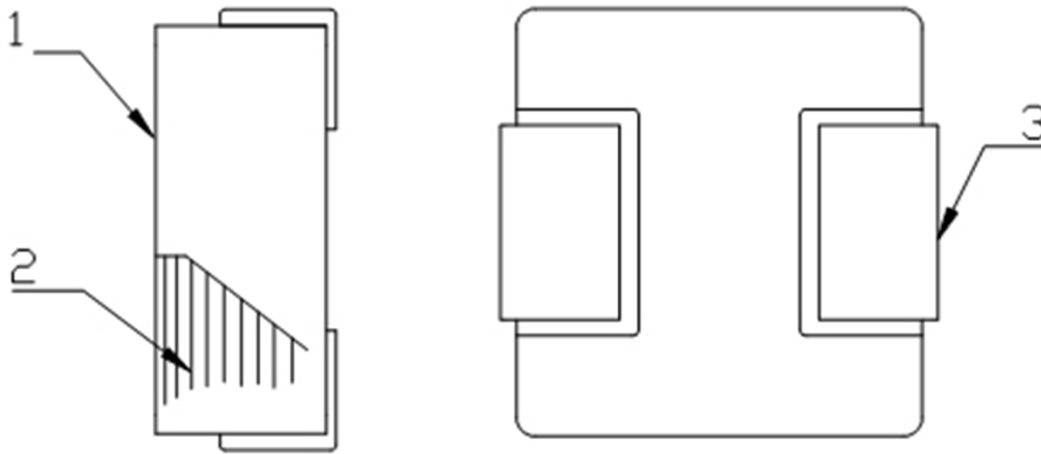
Part Number	Inductance (uH)	Tolerance (±%)	Test Frequency (kHz)	RDC (mΩ) Max	Isat (A)Typ.	Irms (A)Typ.
LMI04020-R10M	0.10	20	100	4	25	12.0
LMI04020-R22M	0.22	20	100	6.6	12.5	9.0
LMI04020-R47M	0.47	20	100	14	9.5	7.0
LMI04020-R56M	0.56	20	100	16	10.0	6.5
LMI04020-R68M	0.68	20	100	21	8.0	5.2
LMI04020-1R0M	1.0	20	100	27	7.0	4.5
LMI04020-1R5M	1.5	20	100	46	6.0	4.0
LMI04020-2R2M	2.2	20	100	58	5.0	3.0
LMI04020-3R3M	3.3	20	100	87	4.0	2.5
LMI04020-4R7M	4.7	20	100	126	3.0	2.2
LMI04020-6R8M	6.8	20	100	135	2.5	2.0
LMI04020-8R2M	8.2	20	100	216	2.5	2.0
LMI04020-100M	10	20	100	258	2.0	1.6

**Note: When ordering, please specify tolerance code. Tolerance: M=±20%**

- Operating temperature range - 55°C ~ 125°C(Including self - temperature rise)
- Isat for Inductance drop 30% from its value without current
- I rms for a 40°C temperature rise from 25°C ambient with current
- Measure Equipment :  
L : WK 3260B or WK 6500P, 100KHz 0.5V  
RDC : CHEN HWA 502 or CHEN HWA 46502B

## 8 LMI04020 Series

### 8.1 Construction:

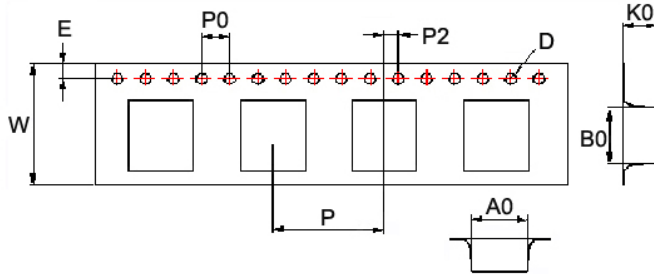


### 8.2 Material List:

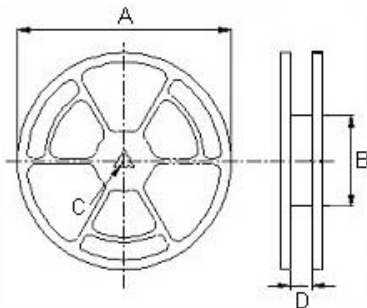
No	Part	Material
1	CORE	Alloy powder
2	WIRE	Copper wire
3	TERMINAL	TERMINAL COPPER

## Packaging Specifications

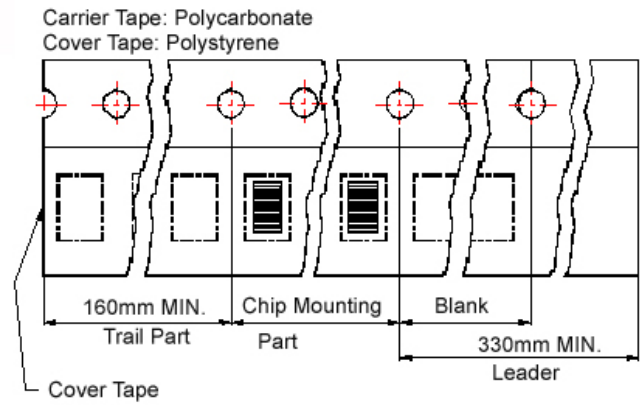
**Tape Dimensions**



**Reel Dimensions**



**Tape Material**



Dimension:

TYPE	Tape Dimensions									Reel Dimensions				Quantity
	A0	B0	K0	D	E	W	P	P0	P2	A	B	C	D	PCS / REEL
04020	4.3	4.9	2.4	1.55	1.75	12	8	4	2	330	100	13	13.4	2000

Test Instruments : WK3260B Impedance / Material Analyzer

