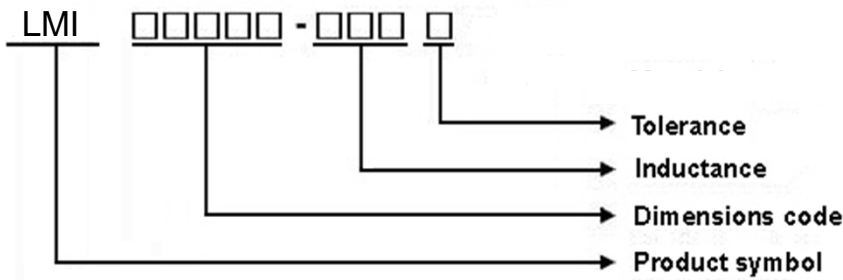


1 Scope: This specification applies to large current and low loss SMD shielding power inductor.

2 Part Numbering:

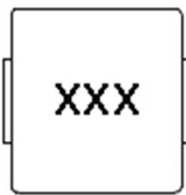


3 Rating:

Operating Temperature: $-55^{\circ}\text{C} \sim 125^{\circ}\text{C}$ (Including self - temperature rise)

Storage Temperature: (on tape & reel): -20°C to $+40^{\circ}\text{C}$; 75% RH max.

4 Marking:



Ex : LMI05018-R47M

Marking : 47M

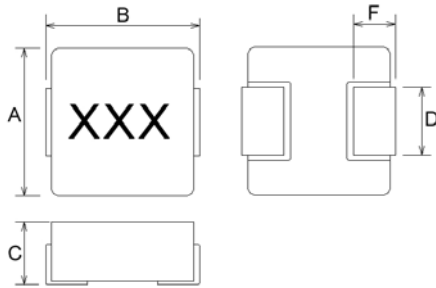
Marking color : Black

5 Standard Testing Condition

	Unless otherwise specified	In case of doubt
Temperature	Ordinary Temperature(15 to 35°C)	20 to 30°C
Humidity	Ordinary Humidity(25 to 85% RH)	50 to 80 %RH

6 Configuration and Dimensions:

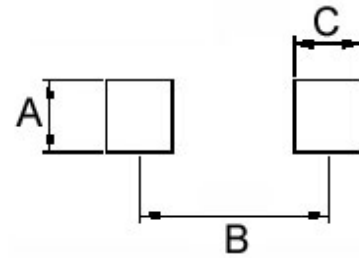
Shape and Dimensions



Dimensions in mm

TYPE	A	B Max	C Max	D	F
05018	5.4±0.35	5.7±0.2	1.8	2.0±0.3	1.5±0.3

Recommended Pattern



Dimensions in mm

TYPE	A	B	C
05018	2.5	4.1	1.9

7 Electrical Characteristics:

Electrical Characteristics

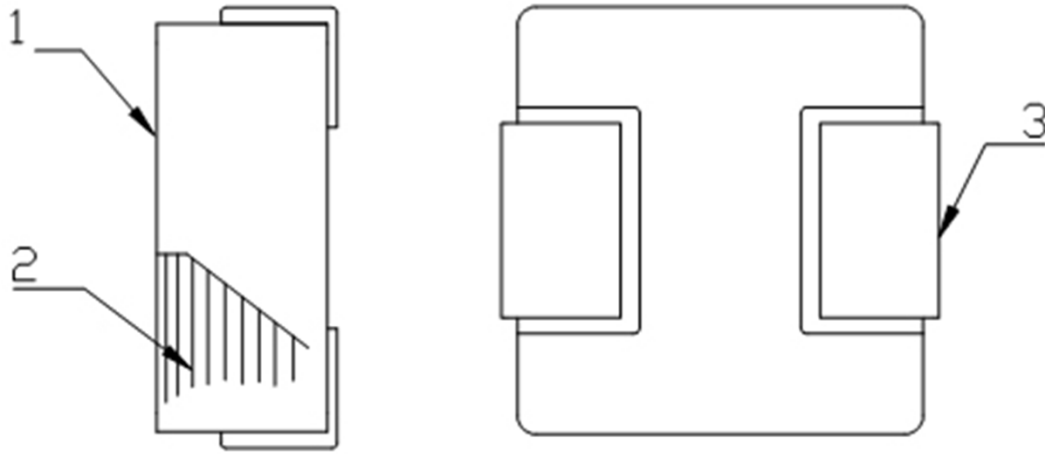
Part Number	Inductance (uH)	Tolerance (±%)	Test Frequency (kHz)	RDC (mΩ) Max	Isat (A)Typ.	Irms (A)Typ.
LMI05018-R47M	0.47	20	100	9.0	15.5	10.5
LMI05018-1R0M	1.0	20	100	17	9.0	8.0
LMI05018-2R2M	2.2	20	100	35	6.5	5.0
LMI05018-3R3M	3.3	20	100	58	5.0	4.5
LMI05018-4R7M	4.7	20	100	85	4.0	3.5
LMI05018-6R8M	6.8	20	100	120	3.4	2.8
LMI05018-100M	10	20	100	155	3.0	2.5

Note: When ordering, please specify tolerance code. Tolerance: M=±20%

- Operating temperature range - 55°C ~ 125°C(Including self - temperature rise)
- Isat for Inductance drop 30% from its value without current
- I rms for a 40°C temperature rise from 25°C ambient with current
- Measure Equipment :
L : WK 3260B or WK 6500P, 100kHz 0.5V
RDC : CHEN HWA 502 or CHEN HWA 46502B

8 LMI04020 Series

8.1 Construction:

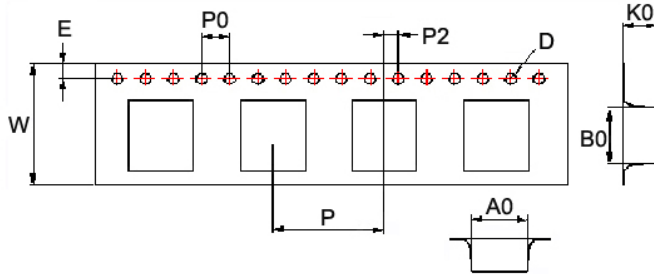


8.2 Material List:

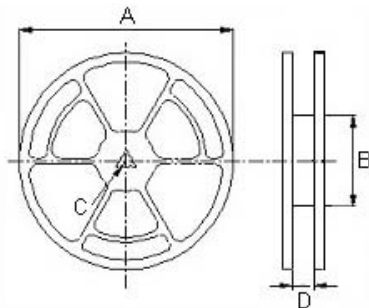
No	Part	Material
1	CORE	Alloy powder
2	WIRE	Copper wire
3	TERMINAL	TERMINAL COPPER

Packaging Specifications

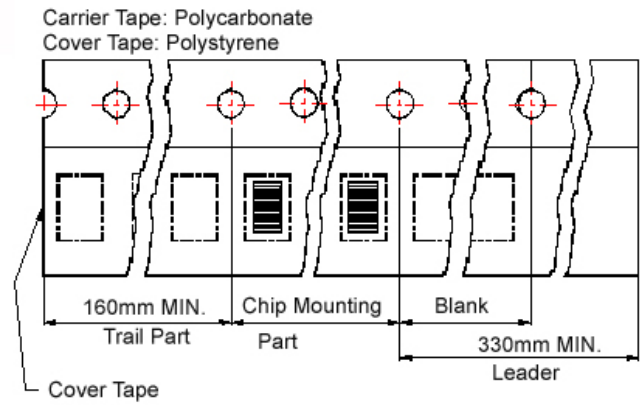
Tape Dimensions



Reel Dimensions



Tape Material



Dimension:

TYPE	Tape Dimensions									Reel Dimensions				Quantity
	A0	B0	K0	D	E	W	P	P0	P2	A	B	C	D	PCS / REEL
05018	5.9	6.2	2.2	1.55	1.75	16	12	4	2	330	100	13	16.0	1000

Test Instruments : WK3260B Impedance / Material Analyzer

