

**Features**

- Extremely small size
- Extremely fast response time
- Excellent SMD handling
- Stable performance over life
- Very low capacitance
- High insulation resistance
- Storage and operating temperature -40...+125°C
- RoHS-compatible

Applications

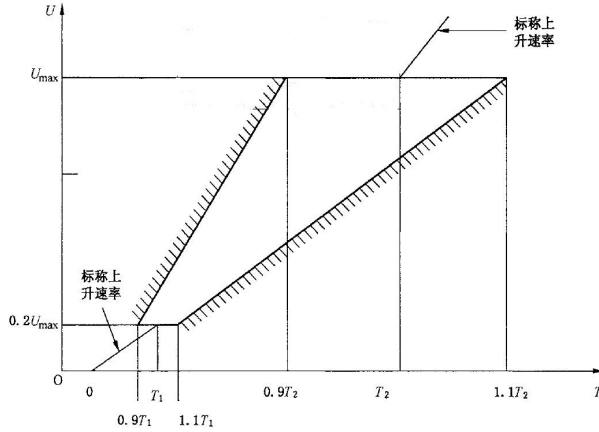
- Splitter
- PCI Cards
- Modem
- Line cards

Electrical specifications

| Part Number | DC spark-over Voltage | Max. Impulse Breakdown Voltage | Discharge Current (8/20us) | Discharge Current (8/20us) | AC discharge Current | Minimum Insulation Resistance | | Max. Capacitance 1MHz |
|-------------|-----------------------|--------------------------------|----------------------------|----------------------------|----------------------|-------------------------------|------|-----------------------|
| | 100V/S | 1KV/us | 10 times | 1 times | 50Hz,1S | Test Voltage DC(V) | (GΩ) | (Pf) |
| | % | V | KA | KA | A | | | |

| | | | | | | | | |
|---------------|---------|------|---|---|---|-----|---|-----|
| SMD4532-075NF | 75±30% | 600 | 2 | 3 | 1 | 50 | 1 | 0.5 |
| SMD4532-090NF | 90±30% | 600 | 2 | 3 | 1 | 50 | 1 | 0.5 |
| SMD4532-150NF | 150±20% | 600 | 2 | 3 | 1 | 100 | 1 | 0.5 |
| SMD4532-200NF | 200±20% | 800 | 2 | 3 | 1 | 100 | 1 | 0.5 |
| SMD4532-230NF | 230±20% | 800 | 2 | 3 | 1 | 100 | 1 | 0.5 |
| SMD4532-300NF | 300±20% | 850 | 2 | 3 | 1 | 100 | 1 | 0.5 |
| SMD4532-350NF | 350±20% | 950 | 2 | 3 | 1 | 100 | 1 | 0.5 |
| SMD4532-400NF | 400±20% | 1000 | 2 | 3 | 1 | 100 | 1 | 0.5 |
| SMD4532-470NF | 470±20% | 1100 | 2 | 3 | 1 | 100 | 1 | 0.5 |
| SMD4532-600NF | 600±20% | 1300 | 2 | 3 | 1 | 100 | 1 | 0.5 |

DC breakdown voltage



8/20us, Test wave

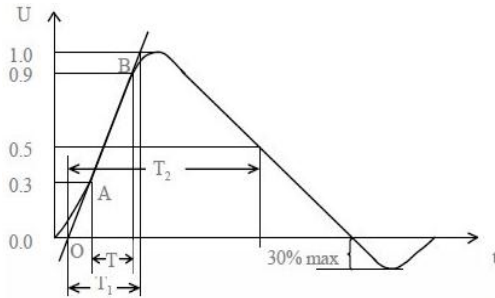
$T1 = 1.25T = 8\mu s \pm 20\%$
 $T2 = 20\mu s \pm 20\%$

10/700us, Test Wave

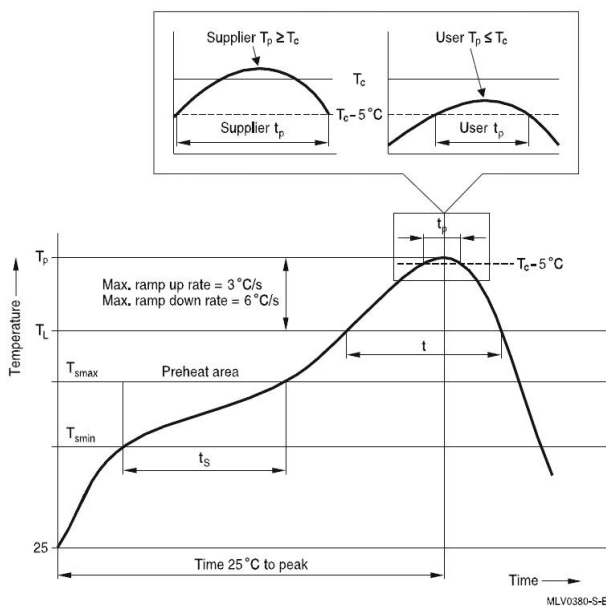
$T1 = 1.67T = 10\mu s \pm 20\%$
 $T2 = 700\mu s \pm 20\%$

10/1000us, Test Wave

$T1 = 1.67T = 10\mu s \pm 20\%$
 $T2 = 1000\mu s \pm 20\%$



Recommended wave soldering profile



| Reflow profile features | | Sn-Pb eutectic assembly | Pb-free assembly |
|---|--|----------------------------------|----------------------------------|
| Preheat and soak - Temperature min - Temperature max - Time | T_{smin} T_{smax} t_{smin} to t_{smax} | 100 °C 150 °C 60 ... 120 s | 150 °C 200 °C 60 ... 180 s |
| Average ramp-up rate | T_{smax} to T_p | max. 3 °C/ s | max. 3 °C/ s |
| Liquidous temperature Time at liquidous | T_L t_L | 183 °C 60 ... 150 s | 217 °C 60 ... 150 s |
| Peak package body temperature *, Classification temperature ** | T_p , T_c | 220 ... 235 °C ** | 245 ... 260 °C ** |
| Time (t_p) ** within 5 °C of the specified classification temperature (T_c) | | 20 s *** | 30 s *** |
| Average ramp-down rate | T_p to T_{smax} | max. 6 °C/ s | max. 6 °C/ s |
| Time 25 °C to peak temperature | | max. 6 min | max. 8 min |

* = Tolerance for peak profile temperature (T_p) is defined as a supplier minimum and a user maximum.
 ** = For details please refer to JEDEC J-STD-020D.
 *** = Tolerance for time at peak profile temperature (t_p) is defined as a supplier minimum and a user maximum.

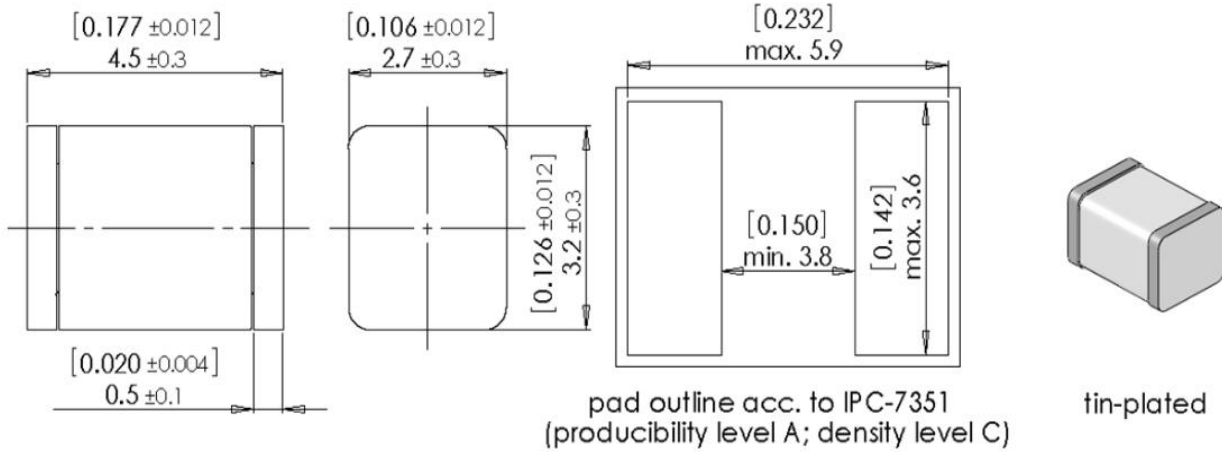


SMD4532-075~600NF Series

Leiditech

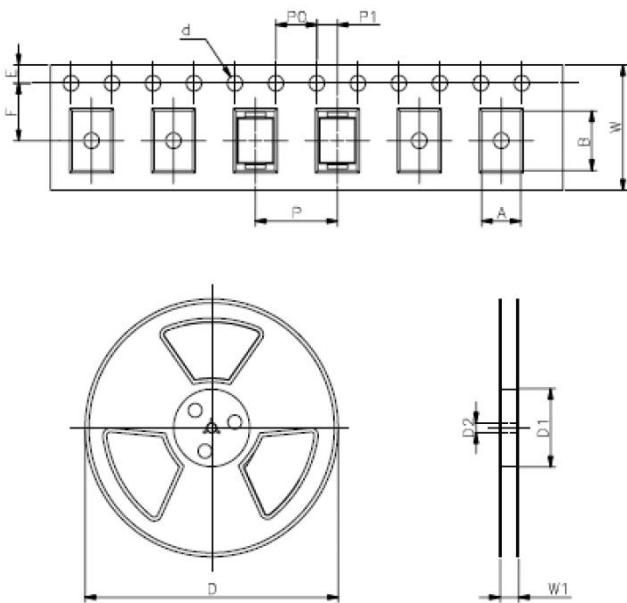
- 1) Sampling size in accordance to AQL(C=0)
- 2) DC spark-over voltage $\pm 30\%$ after load
- 3) Tests according to ITU-T Rec. K. 12 and IEC61643-1

Dimensions in mm and inch [...]



Packaging

2000/2500 pcs/reel



| REF | mm |
|-----|----------|
| A | 3.9±0.2 |
| B | 4.9±0.2 |
| d | Φ1.5±0.1 |
| E | 1.75±0.1 |
| F | 5.5±0.2 |
| P | 8±0.2 |
| P0 | 4±0.2 |
| P1 | 2±0.2 |
| W | 12±0.3 |
| D | Φ330±4 |
| D1 | φ 100±5 |
| D2 | Φ13±0.2 |
| W1 | 16.8±2 |

Cautions and warnings

- Surge arresters must not be operated directly in power supply networks
- Surge arresters may become hot in case of longer periods of current stress (danger of burning).
- If the contacts of the surge arrester are defective, current stress can lead to the formation of sparks and loud noises.
- Surge arresters may be used only within their specified values. In case of overload, the head contacts may fail or the component may be destroyed.
- Damaged surge arresters must not be re-used.

Shanghai Leiditech Electronic Co.,Ltd

Email: sale1@leiditech.com

Tel : +86- 021 50828806

Fax : +86- 021 50477059